

Introducing Cam and Groove Quick Disconnects

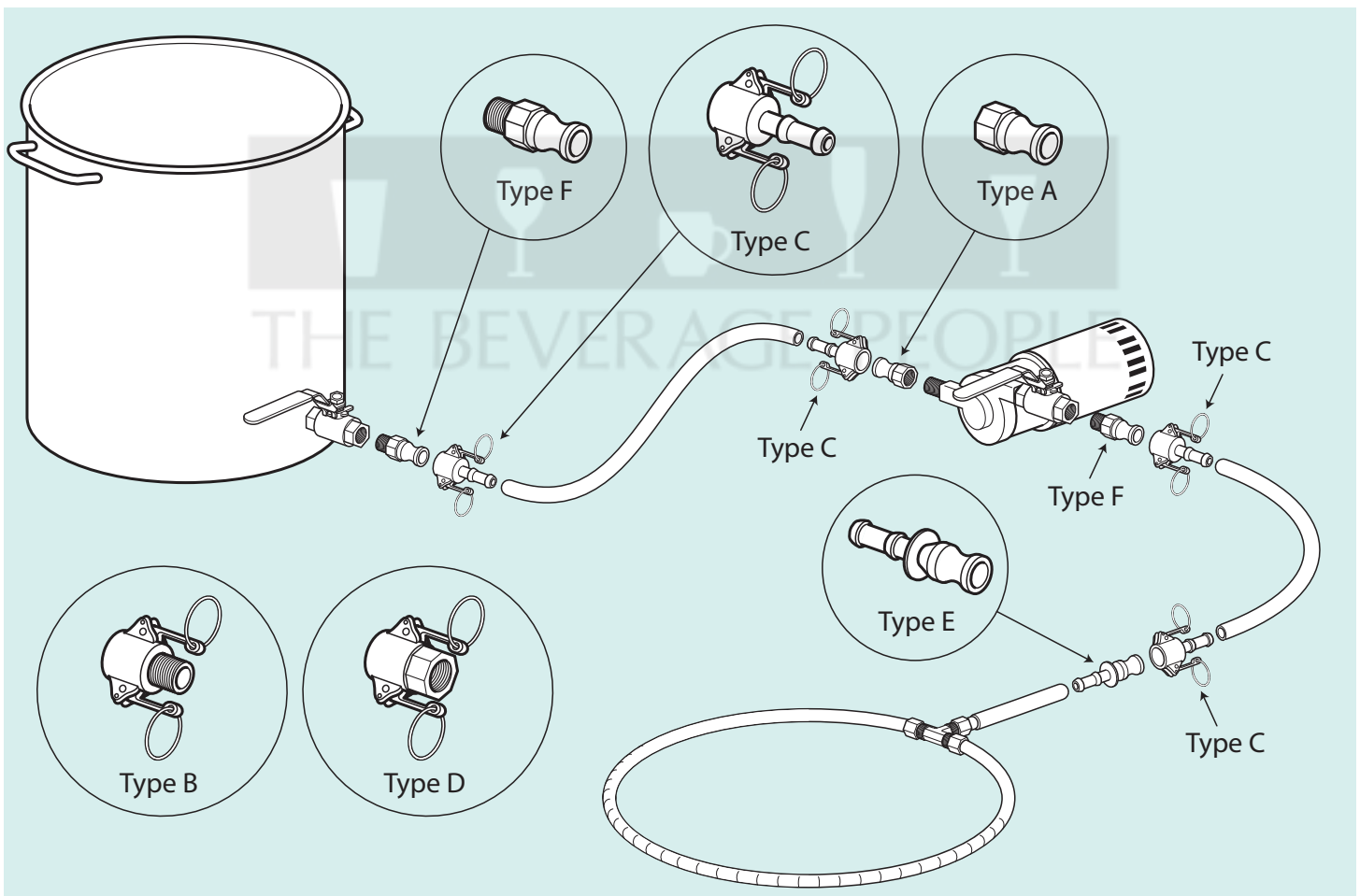
Easy to Use Hose Connectors for Homebrewing and Winemaking

Engineer your system to operate with ease by incorporating stainless steel cam and groove quick disconnect fittings.

Cam and groove fittings preceded the current tri-clamp fittings common to commercial breweries and now available to homebrewers.

Now that we have located a quality supplier for these fittings, anyone can inexpensively and easily connect or disconnect their kettle, reroute their pump for use with a counterflow chiller or a hopback and disconnect your tubing used for any purpose just by outfitting the ports and the hoses with these fittings. They are universally interchangeable at any time.

This diagram illustrates the universal adaptability of the fittings. The choice is then yours to make - fit a Type F to the kettle with a Type C on the tubing or use a Type B on the kettle and Type E on the tubing. These are some of the many configurations possible adapting between 1/2" male and female pipe threaded fittings and 1/2 i.d. tubing.



Cam and Groove Fittings

PB60 Type A, Female 1/2" NPT to Male Adapter.\$5.49
 PB61 Type B, Male 1/2" NPT to Female Adapter\$8.49

PB62 Type C, 1/2" Hose Barb to Female Adapter\$8.49
 PB63 Type D, Female 1/2" NPT to Female Adapter\$8.49

PB64 Type E, 1/2" Hose Barb to Male Adapter\$4.49
 PB65 Type F, Male 1/2" NPT to Male Adapter\$5.49